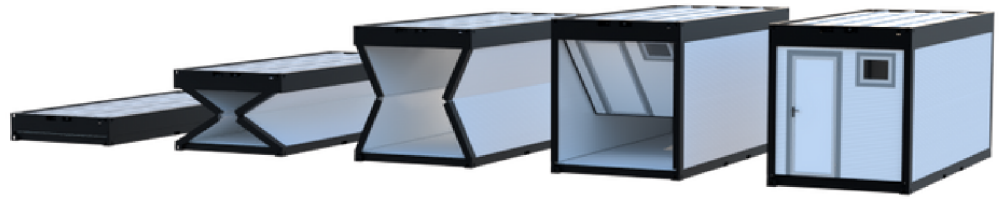


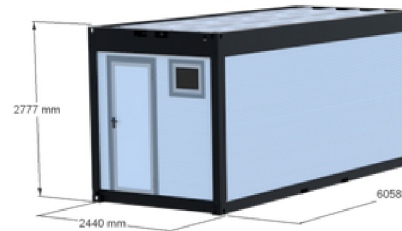


MODULAR SOLUTIONS LTD
INDUSTRIAL / EVENTS / ICE RINKS

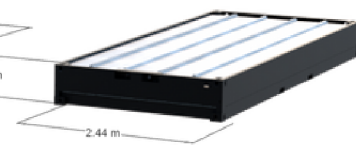
INSTALLATION STEPS



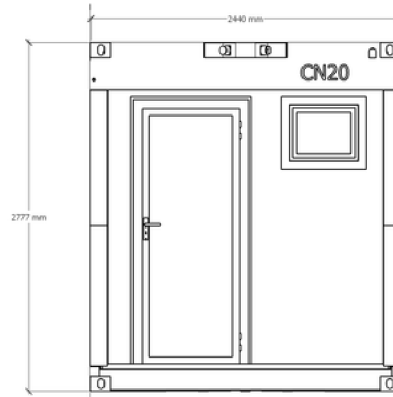
UNFOLDED DIMENSIONS



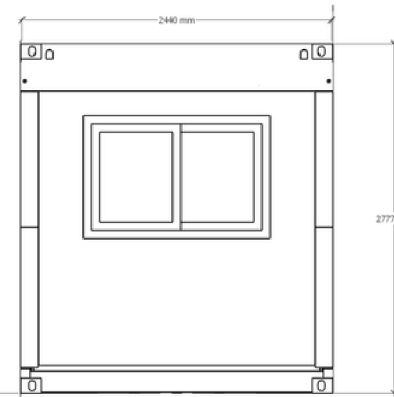
FOLDED DIMENSIONS



FRONT ELEVATION



REAR ELEVATION



SIDE ELEVATION



TOP ELEVATION



Cabin Series	CN20
Length	External: 6058mm / Internal: 5820mm
Width	External: 2440mm / Internal: 2314mm
Height	External: 2777mm / Internal: 2506mm
Folded Height	555mm
Framework	Hot Dipped Galvanised Steel ISO Fixed Frame Framework Colour: Dark Grey
Two Side Walls	Insulated Sandwich Panel
Front & Back Walls	Insulated Sandwich Panel
Top Roof	Corrugated Steel Sheet
Sidewall Colour	Grey / Silver
Bottom Floor	Treated Plywood
Door	Single Personnel Door 1050mm x 2000mm
Window	2no. Aluminium Framed Glass Windows
Total Weight	1800kg
Loading Quantities	40ft Trailer: 10 Units 20ft Trailer: 5 Units
1. 10 units can be loaded onto standard 40ft trailer 2. Set - up and tear in 5-10 minuts with 2no. Personnel 3. High adaptable - Multiple units can be connected 4. Decreases vehicles required (Cut Co2 Emissions)	